

JBC

The Soldering Co.



JNASE

High-Precision Hot Air Station

Matronic

ELECTRONIC PRODUCTION TECHNOLOGY

JNASE High-Precision Hot Air Station

- ▶ JNASE is the only hot air station to **rework, position and remove SMDs without affecting nearby components.**
- ▶ It is perfect for reworking SMDs on **areas with minimal separation.**
- ▶ JBC Exclusive System enables the **regulation of temperature and air flow at very low levels**, in order to avoid the movement of adjoining components.



Intuitive menu
JNASE Station has an intuitive menu that allows **setting up the station parameters easily.**



Pedal
By means of P405 Pedal connection, Heater Hose Set for hot air function and T260 Pick & Place Tool for suction function may be activated and deactivated.

Auto-Start and Auto-Stop Function

The tool is turned on when lifted from the stand, and the auto-stop function, as a safety measure, guarantees that the heat is automatically cut off when the tool is in the stand. **It is safer and more efficient.**

Changing Cartridge

Save time and increase productivity by using NAS Stand, which facilitates **fast and safe use of the cartridge.**

Cartridge

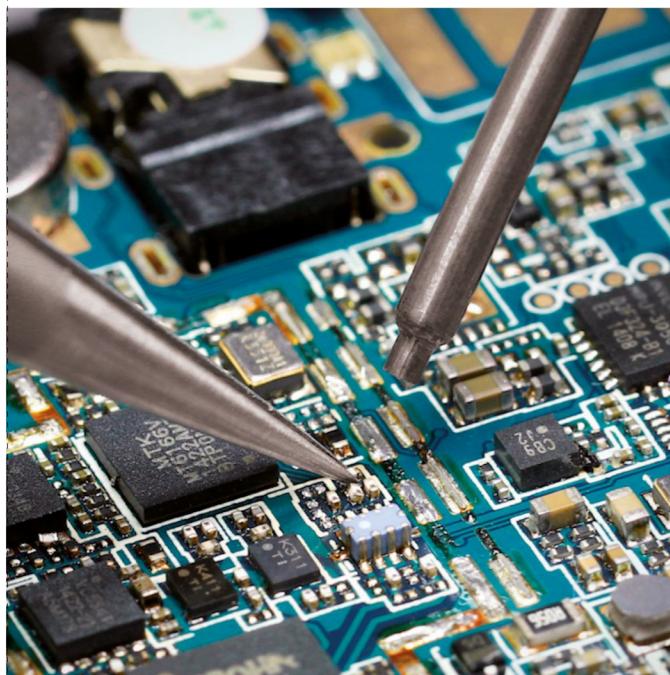
J125 Cartridges are perfect to rework the smallest SMDs from 01005 to SOIC-8 under the magnifying glass.



Pick & Place
The station includes a Pick & Place functionality to position and remove components with **high precision.**

Specifications

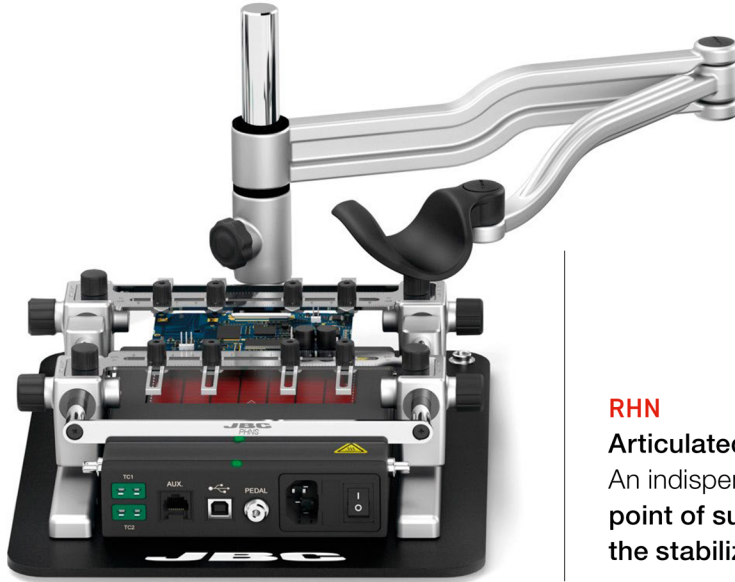
Dimensions	180 x 170 x 110 mm / 7.1 x 6.7 x 4.3 in	Operating temp. range	10 - 50 °C / 50 - 122 °F
Weight	1.35 Kg / 2.96 lb	Cool mode	Temp. off. Used to blow air at room temperature
Ref. - Voltage (AC)	JNASE-9A - 100 V 50/60 Hz. Main fuse: T2A. Rated current 0.85A	Connectors	USB-A / USB-B
	JNASE-1A - 120 V 50/60 Hz. Main fuse: T2A. Rated current 0.85A		RJ12 for RS232
	JNASE-2A - 230 V 50/60 Hz. Main fuse: T2A. Rated current 0.85A		Pedal / Stand
Nominal power	70 W	Air flow regulation	0.15 - 2.5 SLPM
Temperature selection	Room temp. / 150 - 450 °C / 300 - 840 °F	Vacuum	53% / 397 mmHg / 15.6 inHg



Preheater

The use of JBC Preheaters **is indispensable for rework on multi-layered PCBAs** and/or large ground planes **in order to avoid thermal shock** and facilitate soldering as well as desoldering processes.

For an optimal result, it is necessary to preheat the PCB and its components with controlled temperature profiles within the recommended limit values for each application. JBC Preheaters feature temperature profiles specially designed for this purpose and customizable according to need.



RHN

Articulated Hand Rest with base for PHNEK Preheater Set

An indispensable tool for precision work which **provides a point of support very close to the working zone, allowing the stabilization of the pulse rate.**

PHNEK

Preheater Set

The best solution for **rework on small PCBAs, such as the ones commonly used in smartphones.**

It features a heating area of 108 x 70 mm / 4.25 x 2.75 in and two TC connections.

JBC Preheater can be operated easily and conveniently via the intuitive menu navigation and has **matchless reliability in temperature accuracy and control of the PCBA so that no component is damaged.**

It features three work modes: **Power Mode** (working at a fixed power level), **Temperature Mode** (keeps PCBA at a selected temperature) and **Profile Mode** (allows control of the heating rate of the PCBA).

Specifications

Dimensions (preheater unit)	179 x 165 x 41.5 mm / 7.04 x 6.5 x 1.63 in	Operating temp. range	10 - 50 °C / 50 - 122 °F
Weight (preheater unit)	1.2 Kg / 2.6 lb	Temperature measurement	Thermocouple type K
Ref. - Voltage (AC)	PHNE-9KA - 100 V 50/60 Hz. Fuse: 4A.	JBC Set Temperature Profiles	3 profiles (2,3 or 4 steps)
	PHNE-1KA - 120 V 50/60 Hz. Fuse: 4A.	User profiles	20 (up to 6 steps for each)
	PHNE-2KA - 230 V 50/60 Hz. Fuse: 2A.	Maximum work time	600 min or indefinite
Maximum power	300 W		
Temperature range	50 - 250 °C / 120 - 482 °F		

Matronic
ELECTRONIC PRODUCTION TECHNOLOGY

ESD safe

Månskärsvägen 10B 141 75 Kungens kurva
Tel. 08-556 291 00 email: info@matronic.se www.matronic.se